

CRecorder User Guide v.2.1 January 11, 2008

I. Introduction:

Function:

The CRecorder collects real-time engine data such as Ignition Timing, Fuel Trim and Engine Speed, among many other variables. Additionally, it will also read DTCs for cars compatible with OBDII and EOBD. For an additional fee, diagnosis is available from technicians via the internet, at www.crecorder.com or at www.carlogic.org.

Product:

Hardware consists of a. CRecorder and b. USB cable.



Software consists of:

a. Client Software:

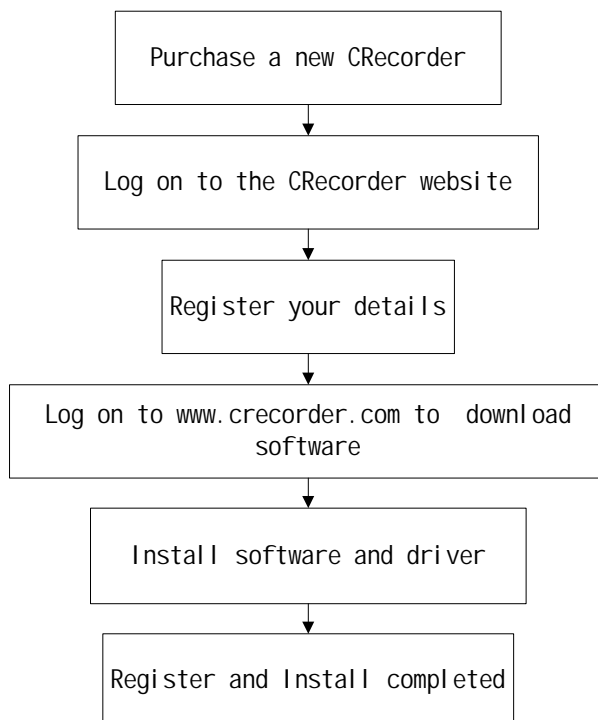
File:	DataStream	Value	Unit	Time
070731112021.x431	SUPP:EVAP.SYS.	Supported		48:47:07
VIN : LSGJT62U66S119512	SUPP:Second Air System	Not supported		48:47:07
StartTime: 7- 8- 2	SUPP:A/C Refrig	Not supported		48:47:07
7:47:46	SUPP:O2S	Supported		48:47:07
EndTime: null	SUPP: O2S Heater	Supported		48:47:07
null	SUPP: EGR System	Supported		48:47:07
Total/Now: 1162 / 1	STAT:CAT	Complete or N/A		48:47:07
	STAT:Heated CAT	Complete or N/A		48:47:07
	STAT:EVAP.SYS.	Complete or N/A		48:47:07
	STAT:Second Air System	Complete or N/A		48:47:07
	STAT :A/C Refrig	Complete or N/A		48:47:07
	STAT :O2S	Complete or N/A		48:47:07
	STAT :O2S HEATER	Complete or N/A		48:47:07
	STAT:EGR SYS.	Complete or N/A		48:47:07
The DTC:	Fuel System Status Bank1	OL,Not Ready CL		48:47:07
No DTC	Fuel System Status Bank2	0		48:47:07
	Calculated Load	0.0 %		48:47:07
	Coolant Temp	34	°C	48:47:07
	S.T Fuel Trim B1	0.00 %		48:47:07
	L.T Fuel Trim B1	0.00 %		48:47:07
	Intake M.A.P	101	Kpa	48:47:07
	Engine Speed	0.00	Rpm	48:47:07
	Vehicle Speed	0	Km/h	48:47:07
	Ignition Timing	-0.5	BTDC	48:47:07
	Intake Air Temp.	33	°C	48:47:07
	Throttle Pos.	0.0 %		48:47:07
	O2S Location	B1:S12-t B2:S-		48:47:07
	O2S B1,S1	0.445	v	48:47:07
	O2S B1,S1 STF	0.00 %		48:47:07
	O2S B1,S2	0.445	v	48:47:07
	O2S B1,S2 STF	-	%	48:47:07
	OBD Test System	OBD2-CALIFORNIA		48:47:07

For Help, press F1

b. CRecorder Website:



Registration and Installation Flow



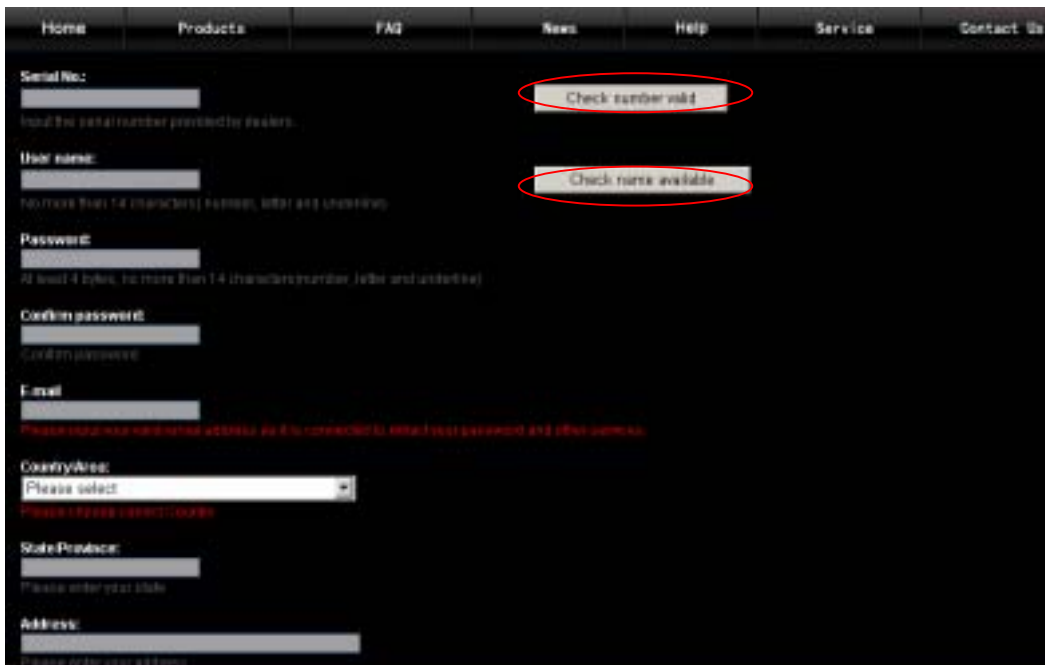
II. Registration and Installation Procedure:

1. Upon purchasing the CRecorder, please log onto the CRecorder website: www.crecorder.com.
2. Click on the Register link.



User Name : Login Register
Password : Forget Password
LAUNCH

To register, you will need the serial number provided with the CRecorder. This is found on a sticker in the foam backing within the packaging contents. You will also need to create a username and password. PLS. DO NOT USE SPACES/BLANKS. Click the CHECK NUMBER VALID or CHECK NAME VALID buttons to help you input a valid username/password. You are also required to fill in the information in the blue fields and provide a valid email address as it is connected to retracting your password and other services.



Home Products FAQ News Help Service Contact Us

Serial No.: Check number valid
Input the serial number provided by dealers.

User name: Check name available
No more than 14 characters, letters, letter and numbers

Password:
At least 4 bytes, no more than 14 (characters, number, letter and underline)

Confirm password:
Confirm password

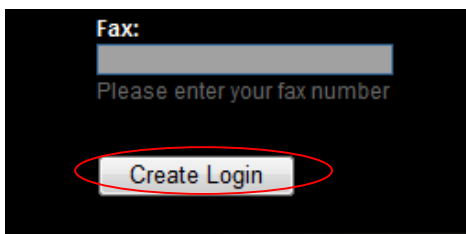
Email:
Please input your valid email address, as it is connected to retract your password and other services.

Country/Area: Please select
Please choose valid country

State/Province:
Please enter your state

Address:
Please enter your address

After the above information has been filled out, click on the CREATE LOGIN link. This will submit your information to LAUNCH. You are now ready to download the client software.



Fax:
Please enter your fax number

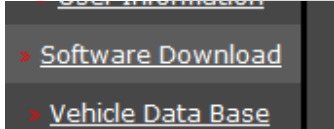
Create Login

3. The next step is to log onto www.crecorder.com. Fill in your username and password and click on LOGIN.

User Name: Login

Password: Login

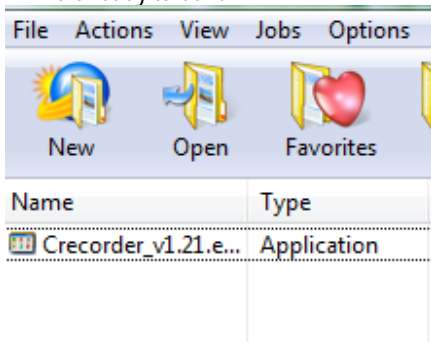
- Next, select SOFTWARE DOWNLOAD. Save this file on your desktop.



Since this is a .zip file, it will need to be decompressed. Most computers will do this automatically since WINZIP is now included in most operating systems. Should you need WINZIP, you can download a free copy at:

<http://www.winzip.com/downwz.htm>

- After completing the download, Save and then Run WINZIP
- In the WINZIP program, open the Client software (it is an executable program named "crecorder_setup.exe" and should be on your desktop.) Once crecorder_setup.exe has been extracted, it is ready to be run.



- After running the set-up program, you should now have an icon on your desktop for the CRecorder. Double clicking on this icon will launch the program.



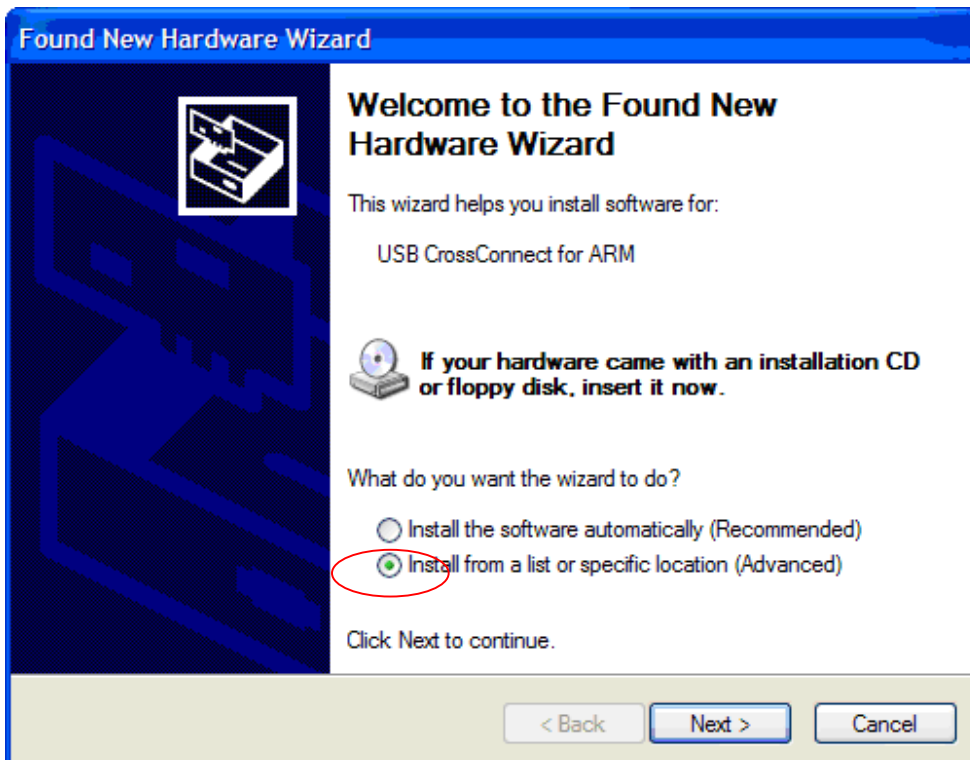
Important Notes:

The CRecorder's client software will work on all Windows 2000, NT, ME, XP, and Vista versions.

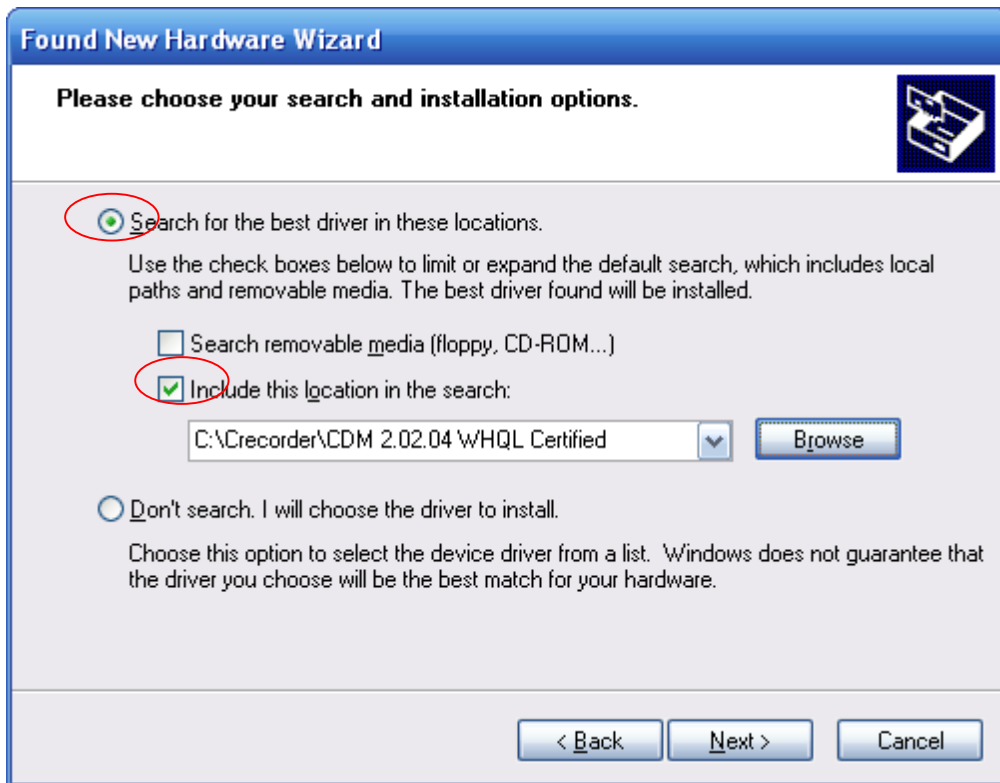
- Connecting the CRecorder to your computer.
If you are using the CRecorder for the first time, you will need to install the driver.



To do so, simply connect the cable to the CRecorder and connect the USB side to your computer's USB port. For XP and Vista users, the driver will install automatically and you will see a message in your bottom task bar stating that "Windows has found new hardware". Simply follow the prompts of the New Hardware Installation Wizard. Select the "Advanced" setting as per below.



Click [Next] to enter the next interface:



Tick "Include this location in the search", and find the route of the driver: C:\Crecorder\ CDM 2.02.04 WHQL Certified. Then click [Next] to next interface until finish.

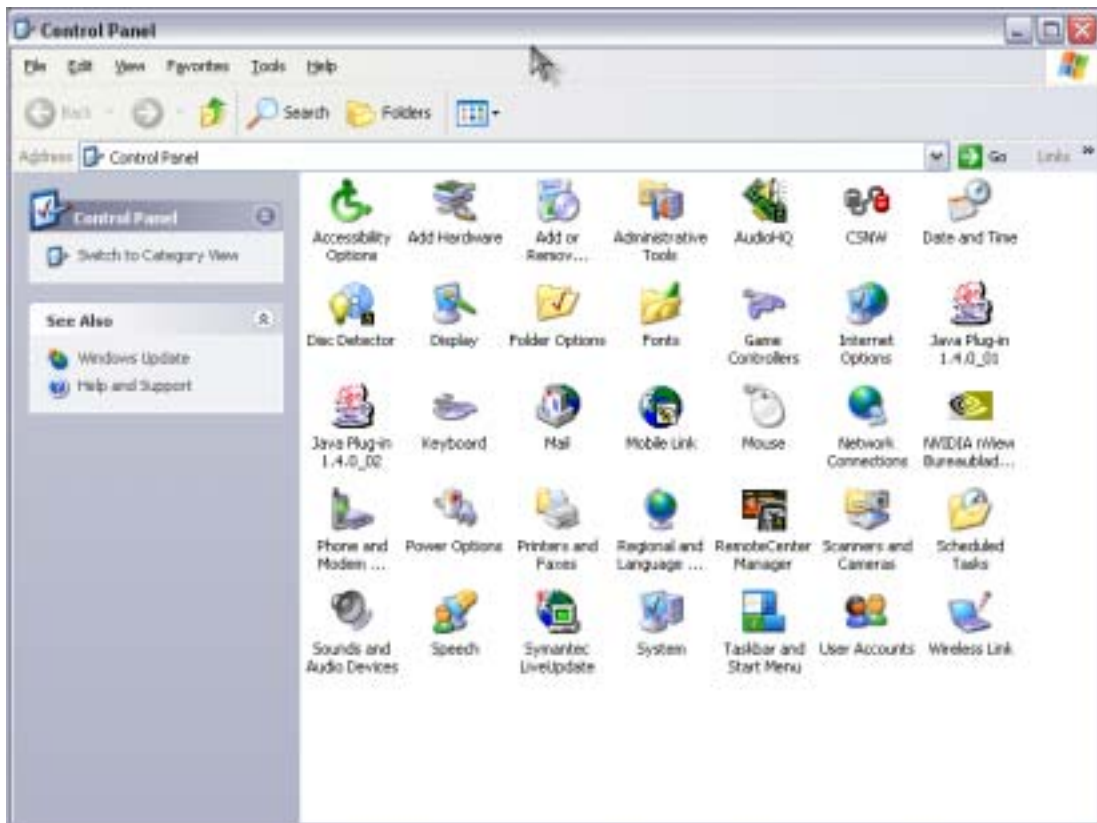
Note: If you are still having connectivity issues or if your computer is failing to recognize that the CRecorder is connected, you will need to configure your USB's port settings.

Here are the steps:

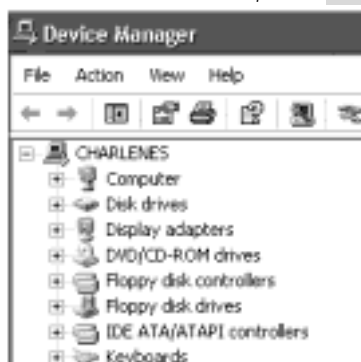
1. Enter your computer's control panel by selecting **Control Panel** on your Start Up menu



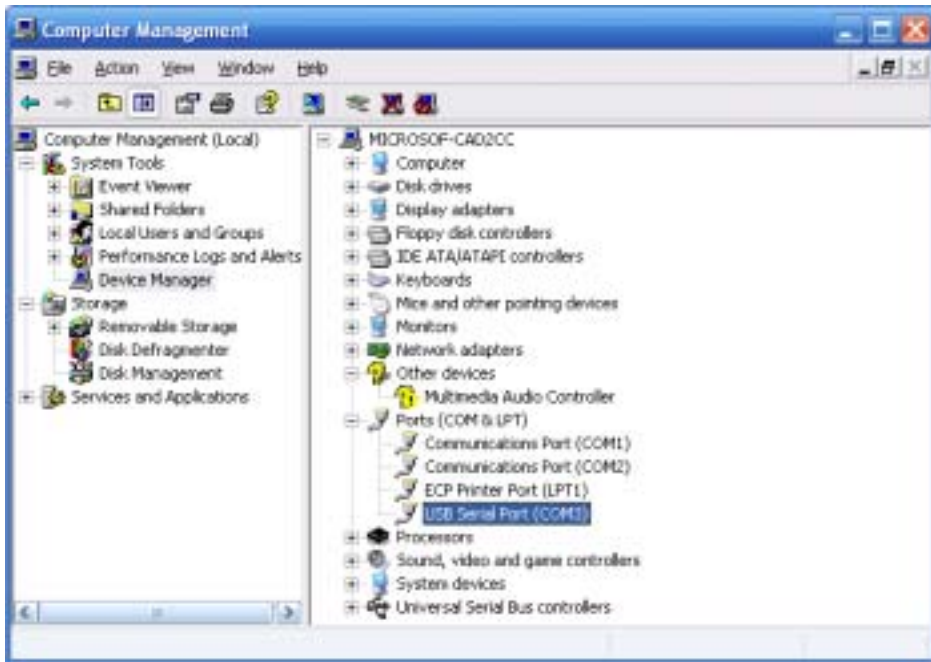
2. then select **System**



3. Once inside SYSTEM, select Device Manager.

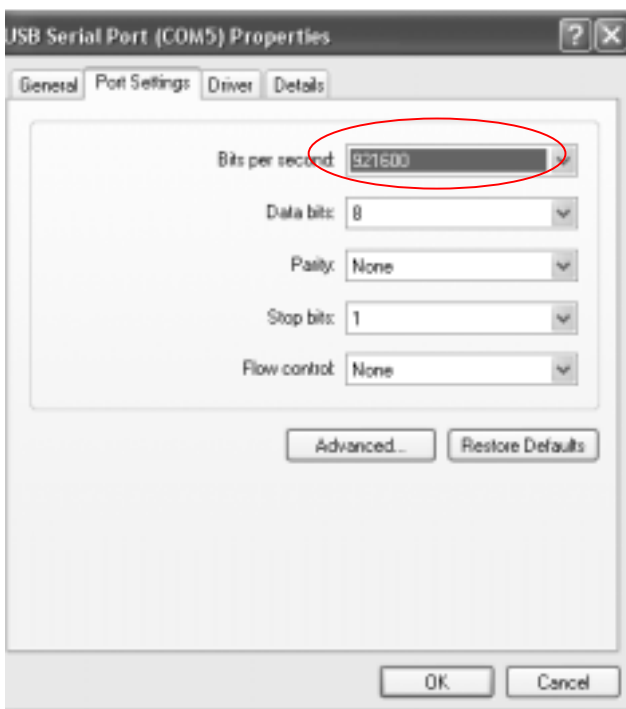


4. Next, click on the port that the CRecorder is connected to.

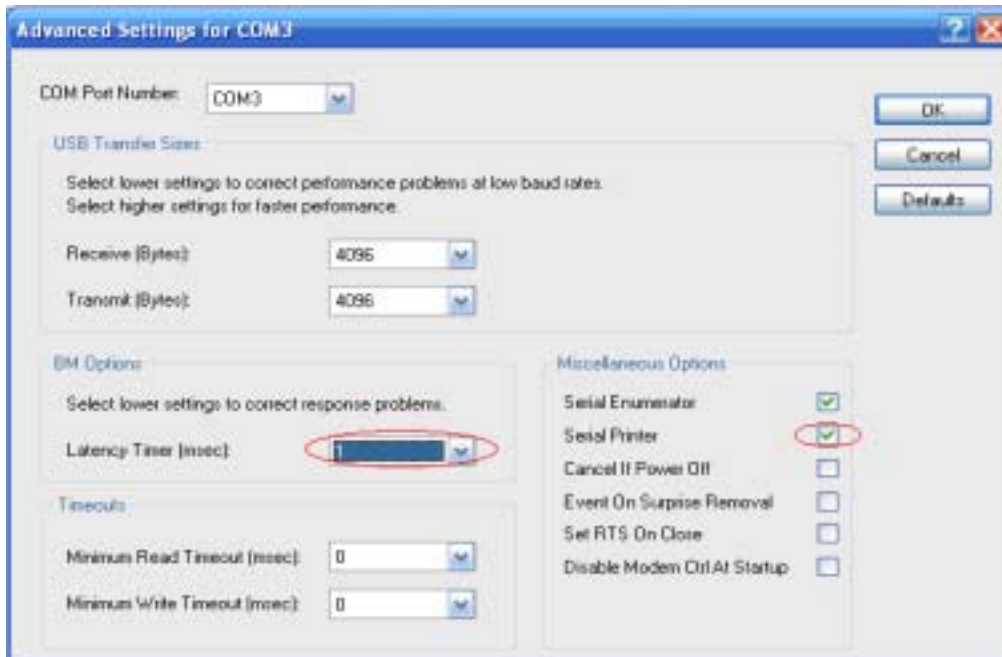


5. Select Port Settings and ensure the following:

The bits per second rate for the port is set to 921600.



Click [Advanced...], once inside, the Latency Timer (msec): should be set to 1, click on the Serial Printer.

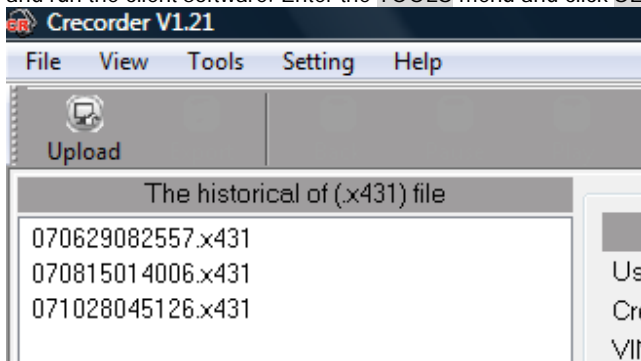


Again, you may be prompted to reboot the computer after having changed these settings.

III. Using the CRecorder:

1. Set time.

The CRecorder is a real-time data logger—hence, its internal clock needs to be set in order to give you the correct time stamp for your data. To set the time on the CRecorder, connect it to your PC via the USB cable and run the client software. Enter the TOOLS menu and click SET TIME.



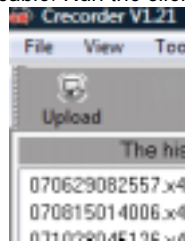
2. Recording Data

Locate your vehicle's datalink connector. Insert the CRecorder and start the ignition (this must be done within a minute of inserting the CRecorder). The CRecorder's indicator light should flash intermittently—this is a sign that communication between your vehicle and the CRecorder is successful. If the light stays on consistently, there is a problem with communication, or your vehicle may not be compatible with the CRecorder.

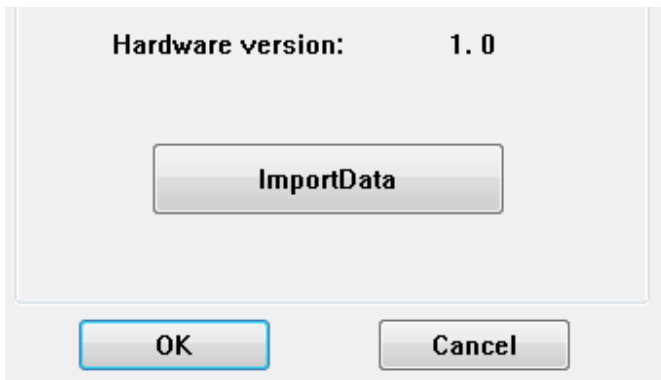


3. Viewing Data

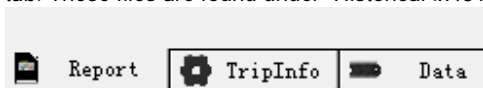
With the ignition switched OFF, remove the CRecorder and connect it to your PC via the provided USB cable. Run the client software. Click on the Upload icon and data transfer will begin.



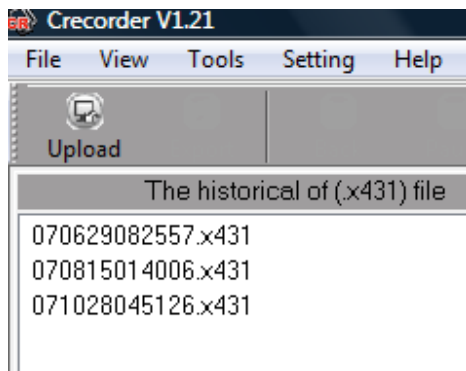
A text box prompting you to import the data will appear, click on the Import Data button to begin the import process. Once imported, you will have the option of viewing the data as a graph, data stream, or as events with a time stamp.



4. Once the data has been imported, TAB 1--the REPORT tab--will give you your readiness monitors. To further view and manipulate the data, begin by selecting the file you would like to view within the REPORT tab. These files are found under "Historical .x431 file"



Select session:



6. After selecting the file, click on the **TRIP INFO** tab.



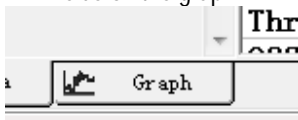
7. Next, select the drive session you would like to view by double clicking on it.

	Start time
1	2007-06-29 08:25:57
2	2007-06-29 08:36:27
3	2007-06-29 08:45:57
4	2007-06-29 11:24:57

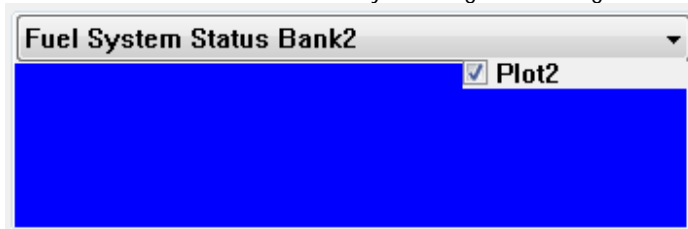
8. Clicking on the session will automatically launch the **DATA** tab. In this tab, you can view time stamped data for each 2 seconds of the drive session. You can also pause, play, rewind and fast forward the data.

Back	Pause	File	Value	Unit
018629002567.v421			FC Stored Amount	0
4118E328380856848			Malfunction IND.	OFF
2007-06-29			Readiness Tests	00072500
08:38:27			EVAL:NoFire	Supported
val			EVAL:Fuel System	Supported
val			EVAL:Component	Supported
20/1			CONT:NoFire	Complete or N/A
			CONT:Fuel System	Complete or N/A
			CONT:Component	Complete or N/A
			SIRFP:CAT.	Supported
			SIRFP:Heated CAT.	Not supported
			SIRFP:EVAP. SYS.	Supported
			SIRFP:Second Air System	Not supported
			SIRFP:A/C Refrig	Not supported
			SIRFP:O2S	Supported
			SIRFP: O2S Heater	Not supported
			SIRFP: EGR System	Not supported
			STAT:CAT	Complete or N/A
			STAT:Heated CAT	Complete or N/A
			STAT:EVAP. SYS.	Complete or N/A
			STAT:Second Air System	Complete or N/A
			STAT :A/C Refrig	Complete or N/A
			STAT :O2S	Complete or N/A
			STAT :O2S HEATER	Complete or N/A
			STAT:SGR SYS.	Complete or N/A
			Fuel System Status Bank1	CL,Using 3025
			Fuel System Status Bank2	0
			Calculated Load	24.7 %
			Coolant Temp	61 °C
			S. T Fuel Trim B1	-0.78 %
			L. T Fuel Trim B1	2.34 %
			Engine Speed	257.75 Rpm
			Vehicle Speed	0 Km/H
			Ignition Timing	10.0 BTDC
			Intake Air Temp.	55 °C
			Mass Air Flow	5.1 g/s
			Throttle Pos.	18.0 %

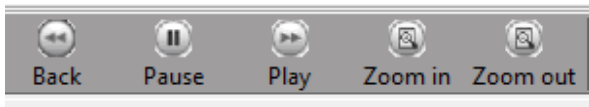
9. To view the data in graph form, select the **GRAPH** tab. In this screen selection, you can view data in 4 fields on the graph.



The parameters for these fields can also be selected by toggling the drop down menu per field. You can also choose to make fields visible or not by checking/un-checking the check box.



10. To view the drive session in playback mode, you will need to **ZOOM IN** on the data. To do so, simply click on the **ZOOM IN** Tab and then select **PLAY**. Again, you can pause the track at any time, as well as rewind and fast forward.



11. Clicking on certain points on the graph will also bring up the **EXACT** reading/measurement per field selected.

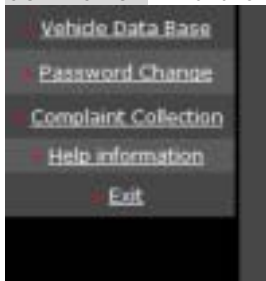


12. Deleting Data

After connecting the CRecorder to your PC and running the client software, select **TOOLS** and then **FORMAT CRECORDER**. This will erase all current data that is stored in the CRecorder. The CRecorder stores data in 24 hour increments. It will also automatically record over previous data once the 24 hr. time period is reached.

IV. Reporting Problems with the CRecorder (hardware and software) and crecorder.com website

Reporting problems is simple and is a valuable resource for us here at LAUNCH to ensure we are offering you the best product and service possible. In the crecorder.com website, click on the **COMPLAINT COLLECTION** link and follow the prompts to submit your issues to our engineers.



For further support, please call us at +35934444305 or email to: info@carlogic.org