

X-631

**Professional
Reliable
Affordable**



w w w . c n l a u n c h . c o m

X-631
Wheel Aligner

- 20 degree CCD Camera
- 6 meter wheel base
- 8 toe sensors
- Fast radio data transfer

LAUNCH

Introduction

Professional:

- 20 degree CCD Camera
- 6 meter wheel base
- 8 toe sensors
- Fast radio data transfer

Time saving features:

- Standard measurement
- Fast measurement
- Additional measurement
- Lower car function
- Customer defined car data base

Reliable:

- Solid constructions of sensor heads
- Water protected
- Standard batteries
- Standard high quality PC
- Self centring clamps, optional adapters for Aluminium rims available

Affordable:

- Unbeatable price / performance ratio
- Designed for long time use

Features



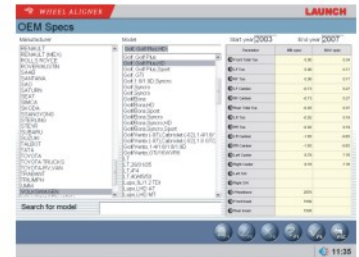
Sensor head:

- Aluminium casting frame
- 20 degree toe CCD Camera
- Camber, Caster inclination sensor
- LCD Display
- Smart keys
- Replaceable without calibration



Programme:

- Standard
- Fast
- Additional
- Zoom function
- Lifted position adjustment
- Self check



Target Data:

- X-large car Database
- Customer Database
- Adjustment pictures

Specifications

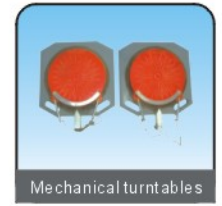
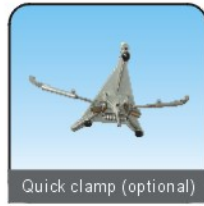
Item	Range
Front total toe-in	±40°
Front toe-in	±20°
Front camber	±8.0°
Caster	±20°
Kingpin inclination	±20°
Rear total toe-in	±40°
Rear toe-in	±20°
Rear camber	±8.0°
Thrust angle	±5.0°

Note: The above accuracy can be confirmed only when the user follows the procedures described by the operation manual.

Requirements on Surroundings

Ambient temperature	-10~50°C
Relative humidity	≤85%

Accessories



LAUNCH TECH CO., LTD

Add: Launch Industrial Park, North of Wuhe Rd., Banxuegang, Longgang, Shenzhen, Guangdong, P. R. China P. C.: 518129

Tel: 0755-84528888 84528431 Fax: 0755-84528889 84528484

<http://www.cnlaunch.com> <http://www.launch-online.com>(Product Demonstration Center)

Service Hot-line: 400 830 5166