

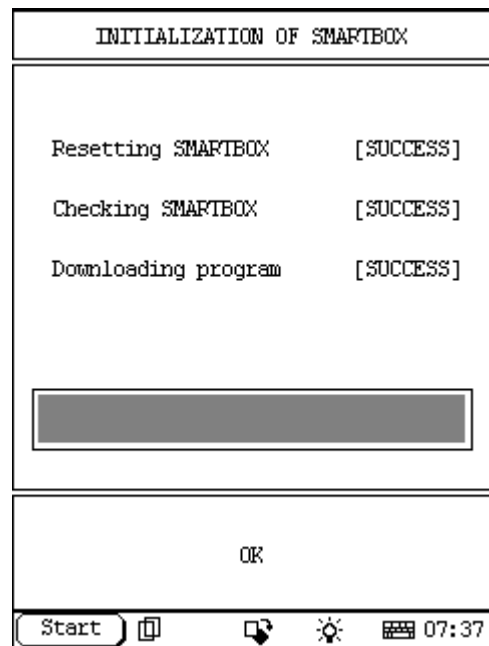
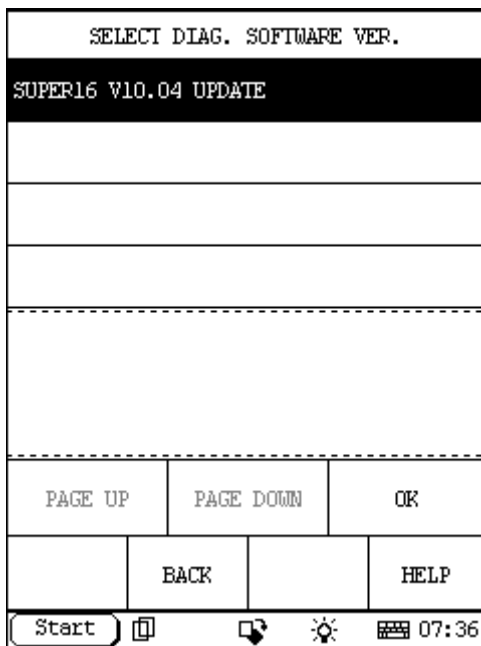
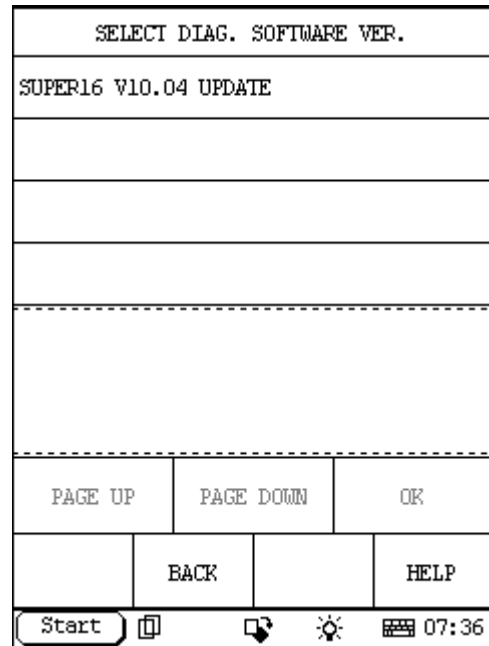
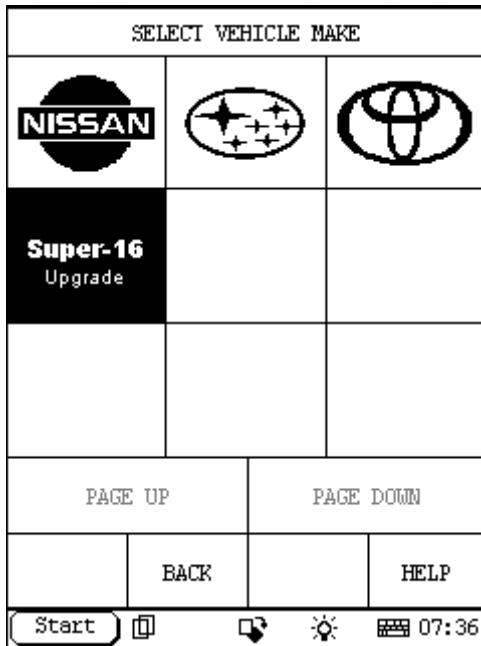
1. Description of the Super-16 connector upgrade program

Launch has upgraded the Super-16 connector software according to the feedback from the market and uploaded it. Please visit www.x431.com.

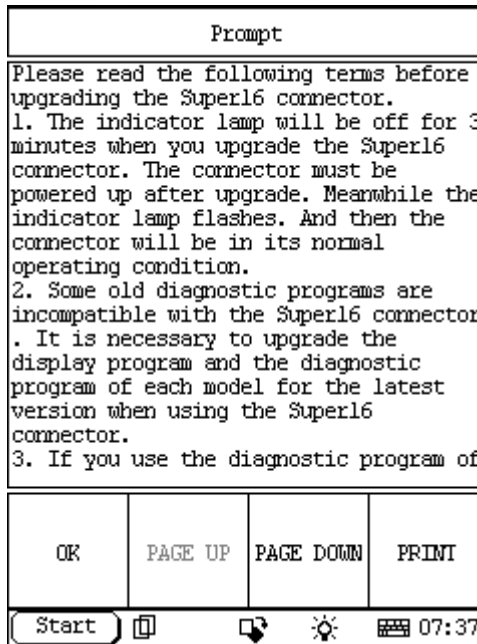
Number	Software Name	Latest version	Release date	Download Version	Language	
a	X431 SYSTEM DATA	10.82	2007-05-14	10.82	English	Down
b	X431 DISPLAY PROGRAM	14.12	2006-06-29	14.12	English	Down
c	X-431DISPLAY	14.33	2009-03-05	14.33	English	Down
d	X431 UPDATE TOOLS	5.0	2007-07-18	5.0	English	Down
A	X431 DISPLAY(South Africa only)	14.33	2009-03-05	14.33	English	Down
B	X431-SENSORBOX	1.02	2005-11-23	1.02	English	Down
C	X431-PCLINK DISPLAY (PC)	2.01	2005-11-03	2.01	English	Down
D	SUPER16_UPGRADE	10.04	2009-03-13	10.04	English	Down
<input type="checkbox"/>	Show all					
<input type="checkbox"/> 1	X431-PCCENTER 1.0 (CF card)	1.02	2008-08-15	1.02	English	View Down
<input type="checkbox"/> 2	CAN_UPGRADE	2.2	2008-05-07	2.2	English	View Down

Our customer can download the program and then upgrade the Super-16 connector. Here is the process:

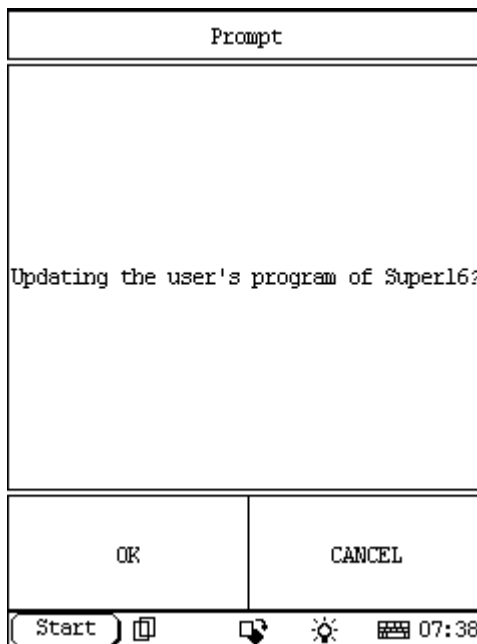
1. Visit www.x431.com. Download the upgrade program of the Super-16 connector (The upgrading method is the same with that of the diagnostic program).
2. Connect one end of the test cable to the X-431 scanner. Then connect the Super-16 connector to the other end of the test cable. The power is supplied by the special DC power supply of X-431 scanner or through the DLC.
3. Turn on the X-431 scanner. Access the diagnostic interface and select the upgrade program of Super-16 connector. Then access the main upgrade interface after initialization.



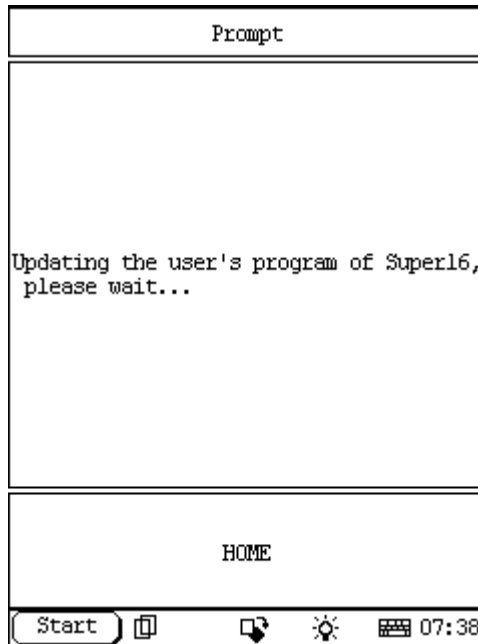
4. Read the note carefully before upgrading. Then click the "OK" button.



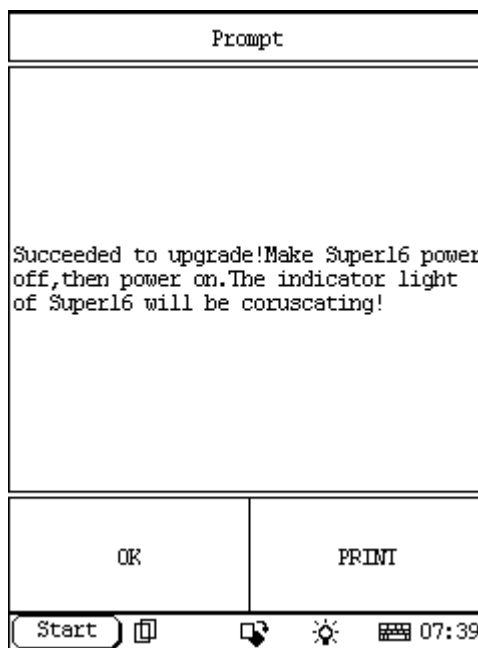
- With this screen displayed, you must decide to upgrade the connector or not. And meanwhile, you are noticed by an indication that the indicator lamp is off during the upgrading process. Click the "OK" button to upgrade.



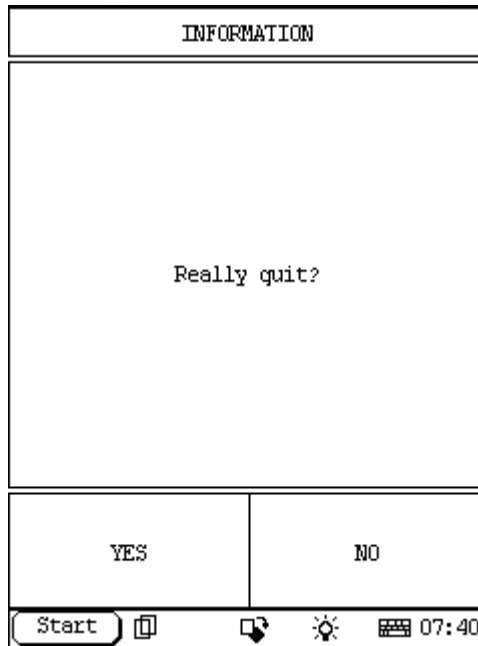
- It starts to upgrade the software of Super-16 connector and will take 3 minutes.



7. The power of Super-16 connector must be cut off after upgrade. Power up again and if the indicator lamp of the connector flashes, the connector is in its normal operating condition. Click the "OK" button to continue.



8. Click the "YES" button to exit.



2. Notes of the Super-16 connector

Please read the following terms before upgrading the Super-16 connector.

1. The indicator lamp is off for about 3 minutes during the upgrading process. Power up the connector again after upgrade. If the indicator lamp flashes, the connector is in its normal operating condition.
2. A new technology is applied to the Super-16 connector. Even if the power is cut off accidentally, the Super-16 connector will not be damaged thoroughly. The power of the connector must be cut off if any abnormal condition occurs during the upgrading process. Then power up and upgrade again.
3. Some old diagnostic programs are incompatible with the Super-16 connector. It is necessary to use the display program of the 14.33 version or advanced and the diagnostic program of the latest version for each model when using the Super-16 connector.
4. If you use the diagnostic program of different versions, please disconnect the Super-16 connector from the DLC after diagnosing with a version. Power up again to diagnose with another version.
5. If some abnormal conditions occur, such as system halted, when using the Super-16 connector, please disconnect the connector from the DLC. And then repeat the diagnostic program.
6. The upgrade program of Super-16 connector will be issued at www.x431.com as the diagnostic program is updated.