

X-431 Update

Contents

Update of Diagnostic Software	1
User Registration	1
Member Login	2
Software Download.....	3
Hardware Requirement.....	3
Software Update	5
Appendix: Flow Chart of X-431 Upgrade	6

Update of Diagnostic Software

The Internet update function of X431 can let the user conveniently and quickly download the software from our website for update.

LAUNCH put the latest version of software to www.x431.com and display the message on the news page. User can use computer to visit the Website at any part of the world. After registration, the latest version of software can be downloaded. Then user can update his X-431 by unzipping and installing the software.

The operation procedure is as follows:

User Registration

Log on www.x431.com. See Fig.50



Fig.50

Select the favorite language in the pull-down menu at the lower right of the interface to enter the homepage. See Fig.51.



Fig.51

Click "Register" in the interface shown in Fig.51 to open the window as shown in Fig.52.

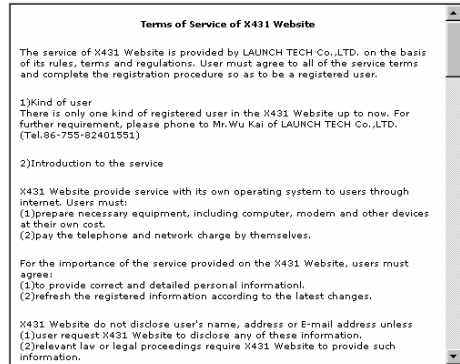


Fig.52

Note:

When the member purchases one or more products after registration, he should log onto the member area, and then click "product control" to register the newly purchased product. Refer to the section "Member login".

After reading the terms of service, user can click "I accept" button to enter the interface shown in Fig.53. Then fill in the serial No. of SMARTBOX, registration No. and dealer code.

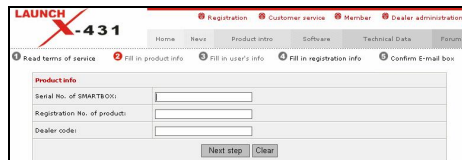


Fig.53

User can find the serial No. of SMARTBOX on the product. The registration No. is in an envelope delivered with the product (do not disclose the number to other person). The dealer code is attached on the last page of the user's manual.

After the information is filled, click "Next step" to enter the interface shown in Fig.54.

Note:

When a product is sold, the dealer will log onto www.x431.com and enter the dealer code in the "Dealer administration" area so that the user can do effective registration later. User should contact the dealer if

registration can not be done effectively.



Fig.54

If the filled serial No. or registration No. is invalid, the screen will display the message as shown in Fig.55. Click "OK" button to return to the previous interface to re-fill the correct numbers.

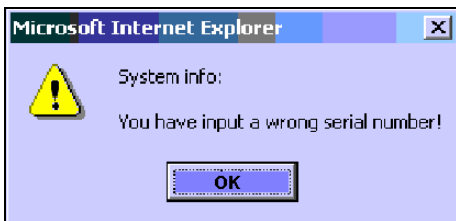


Fig.55

After information are filled in the interface as shown in Fig.54, click "Next step" to enter the interface shown in Fig.56.



Fig.56

Fill in the username and password. Then click "OK" button to enter the interface shown in Fig.57.

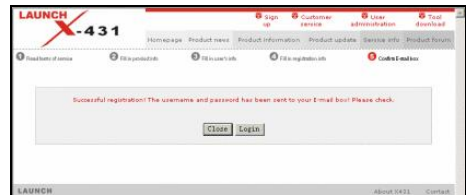


Fig.57

Up to now, the registration is completed. Click "Login" to perform further operation or click "Close" to exit.

Note:
Only the registered user can download and update the software.

Member Login

The user becomes the registered member after registration.

Member can log in the website by filling username and password in the interface shown in Fig.53.

When a registered member purchase one or more new products, it is not necessary to click "Register" on the homepage to register the newly purchased product. Instead, he can enter username and password to log in, and then click "member" to get into the member area. See Fig.58.

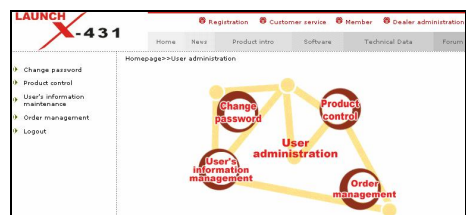


Fig.58

Then click "Product control" to enter the interface as shown in Fig.59.

Serial No.	Name of BDX	Dealer	New product registration
980240036800	SmartBox		Handover
980240089800	SmartBox		Handover
980240015800	SmartBox		Handover
980240042000	SmartBox		Handover
980240059900	SmartBox		Handover
980240083000	SmartBox		Handover

Fig.59

Click "New product registration" to enter next interface as shown in Fig.60.

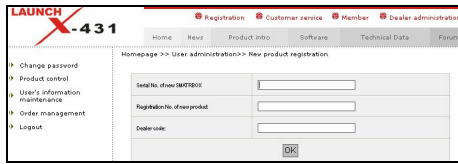


Fig.60

Then, follow the prompts on the screen to finish the new product registration.

Software Download

Newly registered user can download, free of charge, the same software as that installed in the purchased main unit, or the available newer version of the software.

After filling in the username and password, and clicking "Login" to enter the interface as shown in Fig.61.

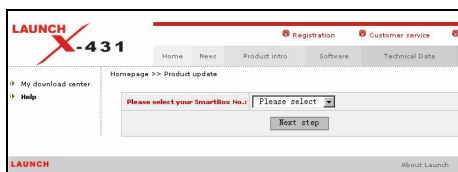


Fig.61

Select the SMARTBOX No. in Fig.61 and then click "Next step" to enter the web page of software download.

The screen will show a list of software and different versions for downloading. See Fig.62. If no newer version is released, the item will be marked "Not ready".

Serial No.	Software	Present version	Versions for download	Latest version	Language	Function	Download
1	X431 UPDATE TOOL	2.2			Chinese		⤵
2	Display program	Not ready	10.04	10.04	English	Check	⤵
3	SWR	10.06	10.06	10.01	Chinese	Check	⤵
4	Mercedes-Benz	10.06	10.06	Not ready	English	Check	⤵

Fig.62

Select the latest version and click "Check" button or "Download" icon to open the function

introduction page for the software. The information on the page includes new function, tested vehicle, hardware requirement, etc. See Fig.63.

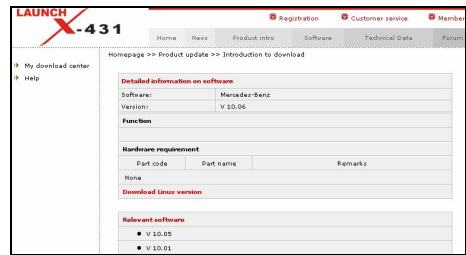


Fig.63

A new page will appear when user clicks "Download Linux version" button. The pop up window will show the description for updating the downloaded software. See Fig.64.

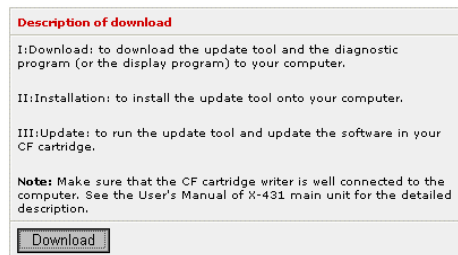


Fig.64

Click "Download" button to save the software into the user's computer.

It is necessary to download the "X431 Update tool" and put it in the same folder (e.g. "X-431 update" folder) as other downloaded software if it does not exist in your computer. It is going to be used later during updating.

Hardware Requirement

The following should be made ready:

1. A computer that can be connected to Internet.
2. A CF card reader/writer and a CF card that need to be updated.

See Fig.65 for hardware connection.

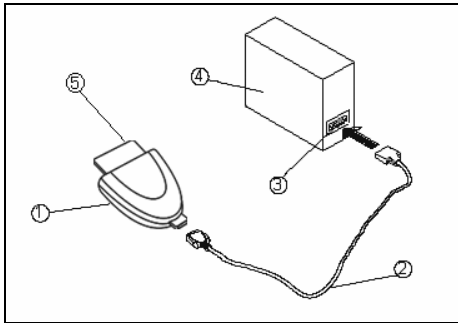


Fig.65

- 1-CF card reader/writer 2-USB cable
3-USB Port 4-Computer 5-CF cartridge

- 1 Insert the CF card into the CF card reader/writer.
- 2 Connect one end of the USB cable to the port of the CF card reader/writer, and the other end to the USB port of the computer.

Precaution on operation of the CF card reader/writer:

1 Install the driver

If it is first time to use the CF card reader/writer, you may have to install its driver. Use CD-ROM or floppy disk which are bought separately or delivered with the CF card reader/writer to install the driver.

CF card reader/writer uses the default driver of the operating system and requires no driver installation on Windows Me/2000/XP and Mac OS 9.x/Mac OS X. However, it is necessary to install the driver on Windows 98.

The installation procedure is as follows:

1. Boot Windows 98.
2. Insert the CD-ROM into CD-ROM drive.
3. Connect CF card to the USB port of the PC with the attached USB cable.
4. Find and Double click on setup.exe file in the catalogue of CD-ROM. The system will make preparation for the installation. See Fig.66.
5. When the preparation is complete, the screen will prompt to continue the operation. See Fig.67. Click "Next" to start installation.

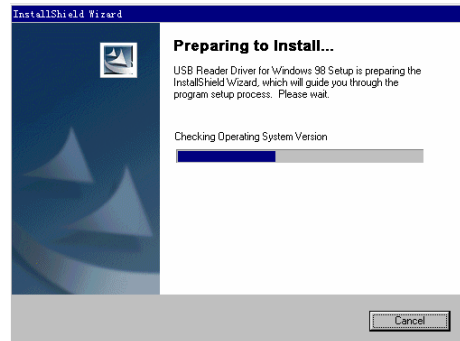


Fig.66

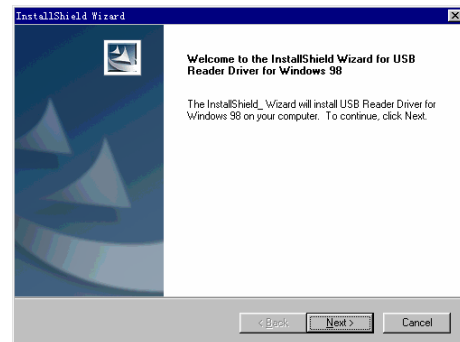


Fig.67

6. When installation is finished, the screen will display the information as shown in Fig.68. Click "Finish" to exit.

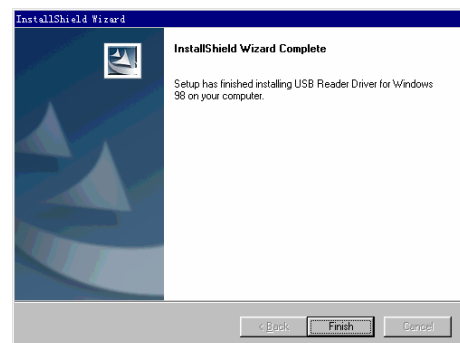



Fig.68

When the CF card reader/writer is installed successfully, a "Removable disk" icon  will be added in the catalogue of "My computer".

Note:

- ◆ Do not unplug the CF card reader/writer from the USB port while its LED is

blinking, otherwise data would be damaged!

- ◆ *Data on CF card cannot be restored from the "Recycle Bin" once deleted.*

2 Pull out the CF card

The CF card must not be pulled out when the CF card reader/writer is being used. Otherwise, the data in the CF card will be lost.

Procedure for pulling out the CF cartridge:

On the desktop of Windows, open the window of "My computer". Click the right mouse button on "Removable disk" to pop up a menu. Select "Ejector (J)" in the menu. Then pull out the CF card. The written data may be lost if the CF card is pulled out discretionarily. When you want to use the CF card again, put it in.


Select the module for update in the interface shown in Fig.69, and click "Update" icon to update. When the update is complete, prompts will appear to notify successful update.

After completion of update, press "Esc" key to exit the update tool.

If error message appears during update, it may be the following circumstances. Solve the problem and try again.

- 1) CF card reader/writer is not well connected to the computer, or its driver is not correctly installed in the computer.
- 2) Memory of CF card is insufficient.
- 3) Other cause.

Software Update

Open the "X-431 update" folder, and double click the icon . Then install the update tool according to the prompts on the screen.

When the installation is complete, the "X431 update tool" icon will appear on the desktop.

Make sure that the X-431 CF card reader/writer and the CF card are well connected to the computer. Then double click the "X431 update tool" icon to run the program. The program will automatically check the downloaded update files, including the diagnostic program and the display program. See Fig.69.

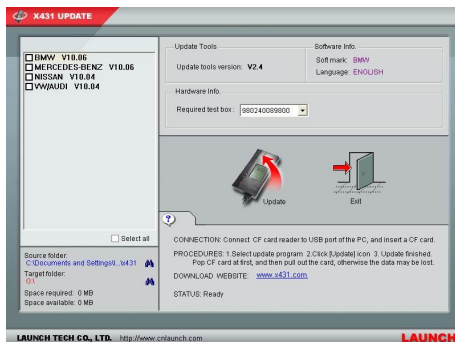


Fig.69

Appendix: Flow Chart of X-431 Upgrade

